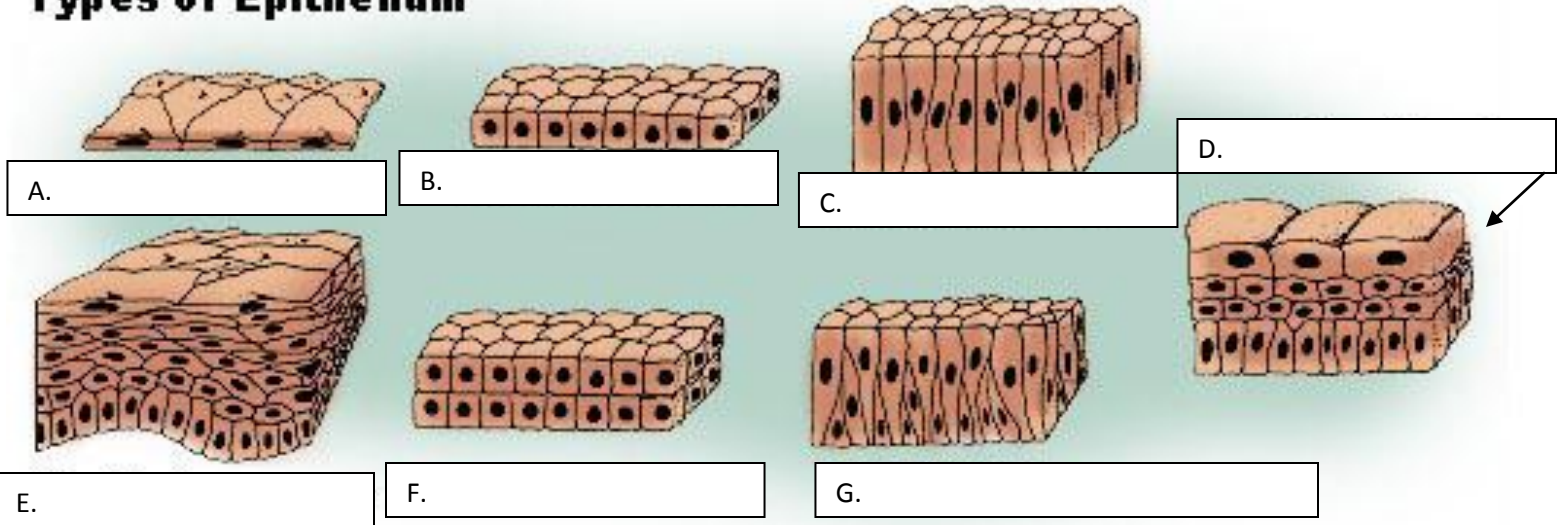


1. Histology is the study of _____.
2. Name the four main types of tissues:
3. Label the following types of epithelial tissues by determining the number of layers and the shape of the cells. Then list the location(s) and function(s) of those types of epithilium.

Types of Epithelium



Location

Function

A.

B.

C.

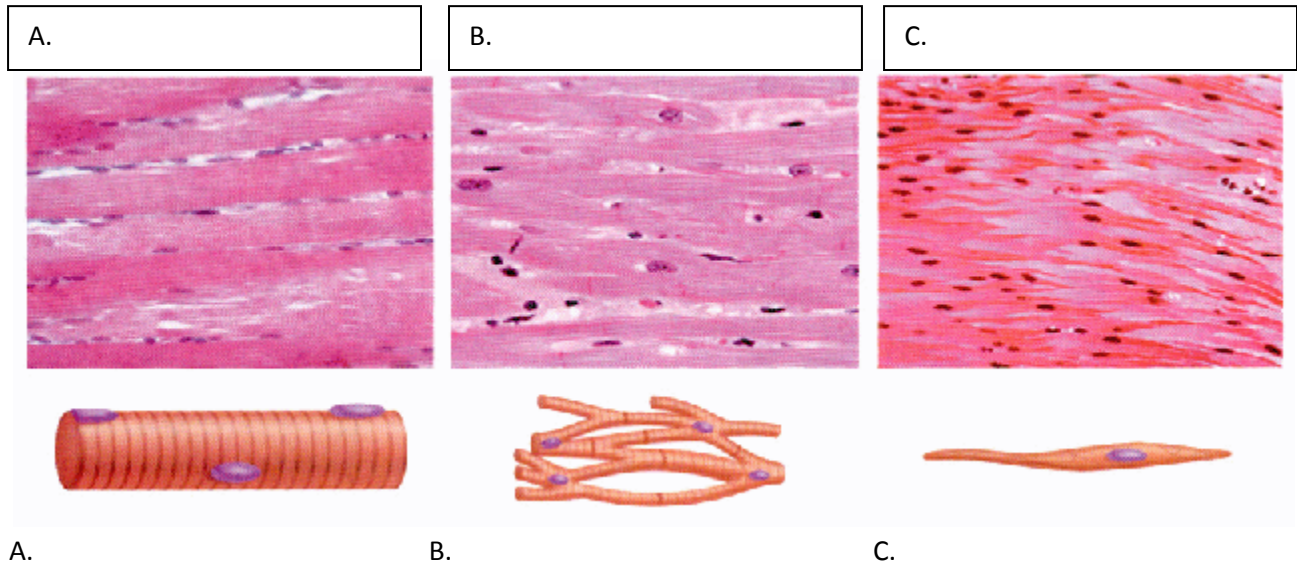
D.

E.

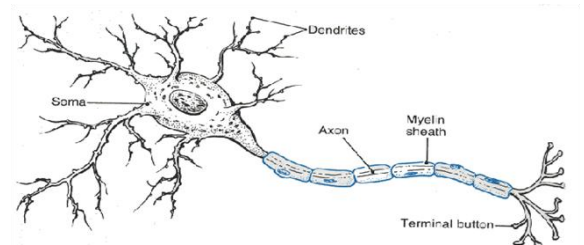
F.

G.

4. On what type of epithelial cells might you find cilia?
5. What is the purpose of cilia on some epithelial cells?
6. Which type of tissue of the main four fits best on the blanks below:
 - A) Adapted for contraction: _____
 - B) Two main components are cells and the extracellular matrix. _____
 - C) Sheets of closely packed cells _____
 - D) Composed of neurons and supporting cells _____
 - E) Lacks blood vessels _____
 - F) Supports and protects organs _____
 - G) Lines body cavities and covers organs _____
 - H) Forms and conducts impulses _____
 - I) Functions in absorption and secretion. _____
7. Name the 3 different types of Muscle Tissue and then explain whether they are voluntary/involuntary, striated/non-striated, and where they are located.



8. Explain the difference between Neuron and Neuoglia.



9. Where do you find nerve tissue?

10. _____ tissue, is the most abundant tissue in the body.

Of Connective Tissue Proper

1.

2.

Of Specialized Connective Tissue

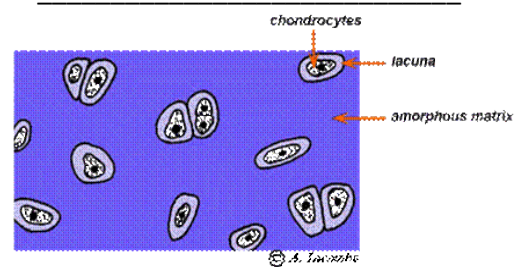
3.

4.

5.

11. Of Connective Tissue Proper, what is the difference between loose and dense tissue? Tell me where you can find each and what function they carry out.

12. What type of connective tissue does not have any blood vessels or nerves? _____
List some areas of the body in which you would find this tissue:



13. What are the two types of bone tissue? Describe each.

14. What are 3 functions of blood tissue?