

ANIMAL CELL COLORING

Name _____

Cell Membrane (light brown)

Nuclear Membrane
(dark brown)

Ribosome (red)

Nucleoplasm (pink)

Nucleolus (black)

Cytoplasm (light yellow)

Mitochondria (orange)

Microtubules (dark green)

Golgi Apparatus (pink)

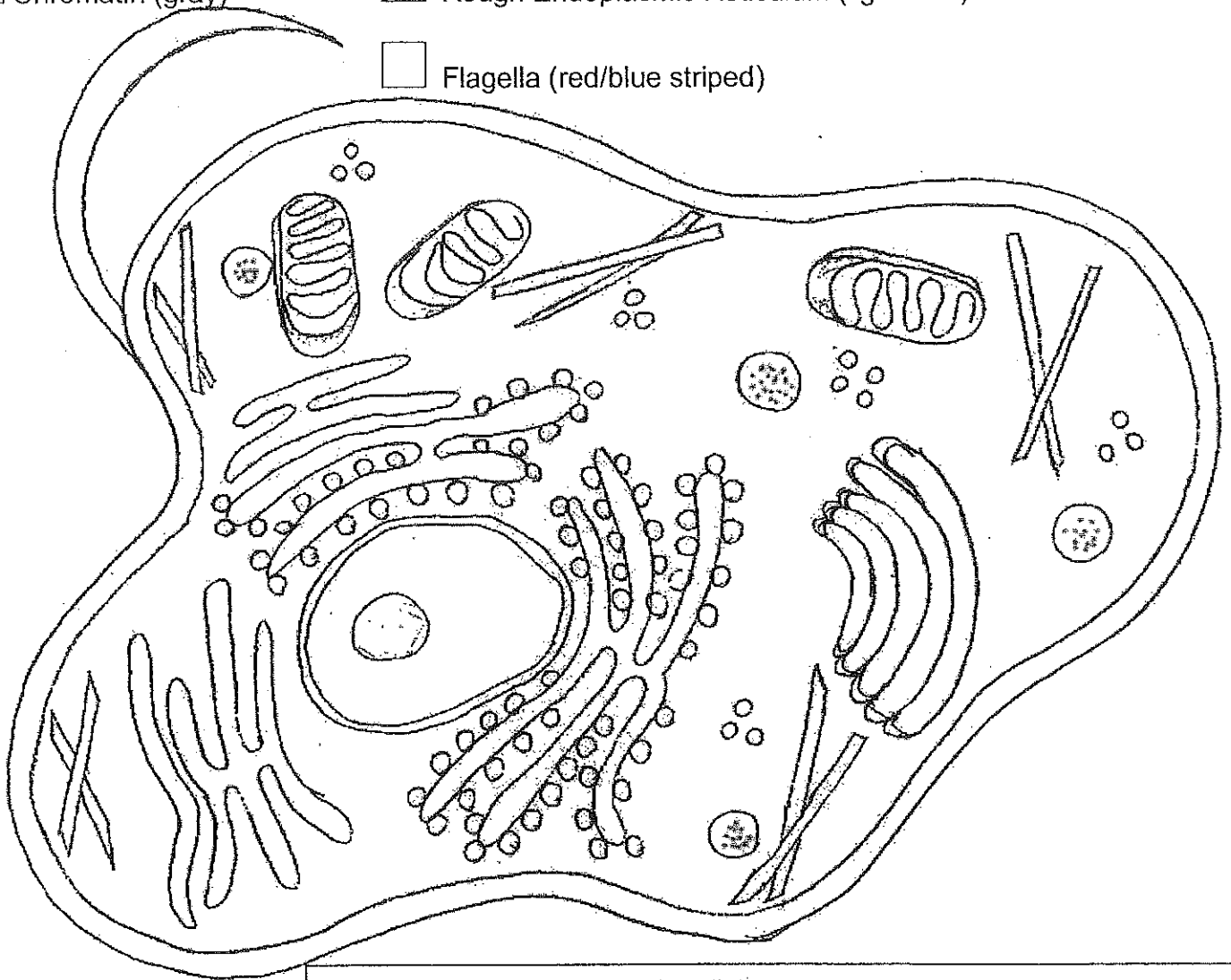
Lysosome (purple)

Smooth Endoplasmic Reticulum (dark blue)

Chromatin (gray)

Rough Endoplasmic Reticulum (light blue)

Flagella (red/blue striped)



Briefly describe the function of the cell parts.

1. Cell membrane _____
2. Endoplasmic Reticulum _____
3. Ribosome _____
4. Golgi Apparatus _____
5. Lysosome _____
6. Microtubule _____
7. Mitochondria _____
8. Nucleus _____