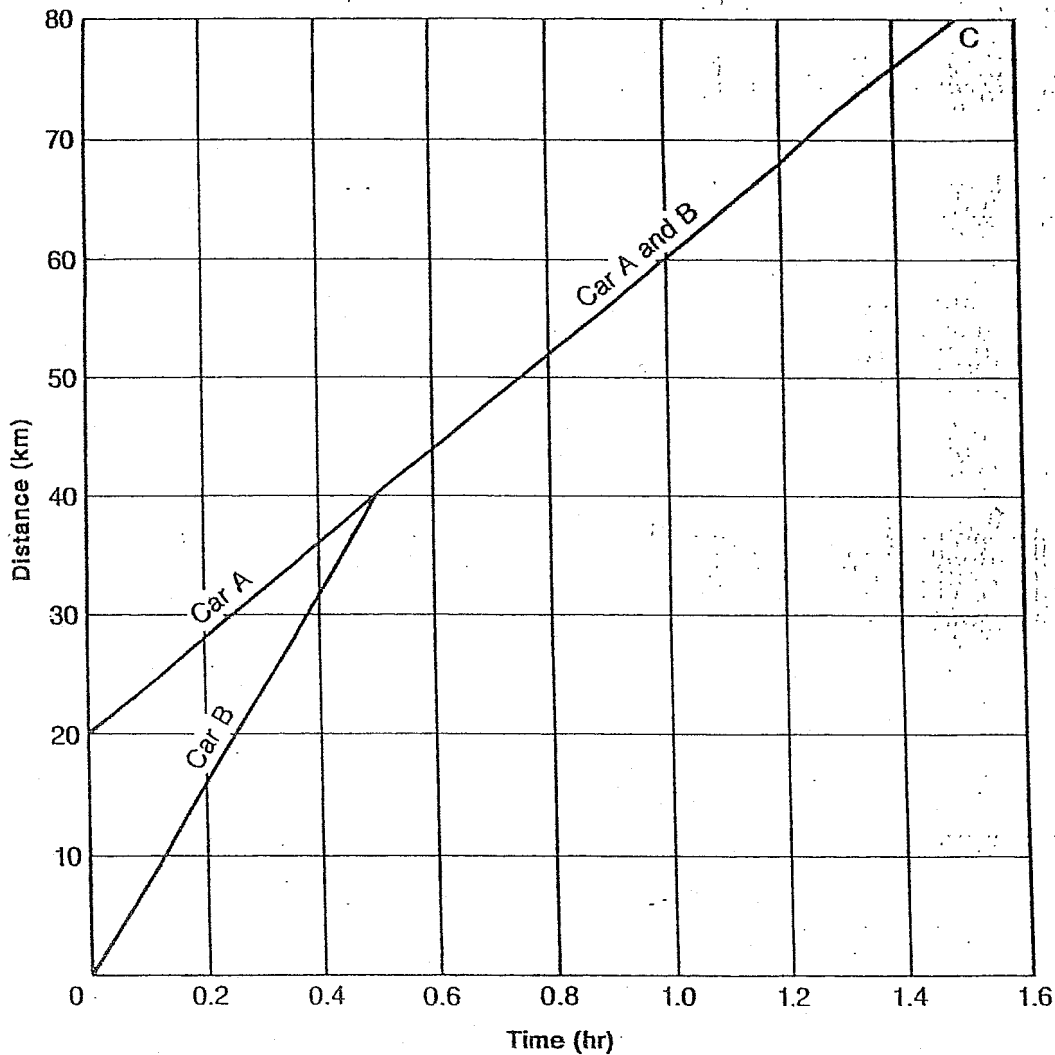


ACTIVITY ■ What Is Motion?

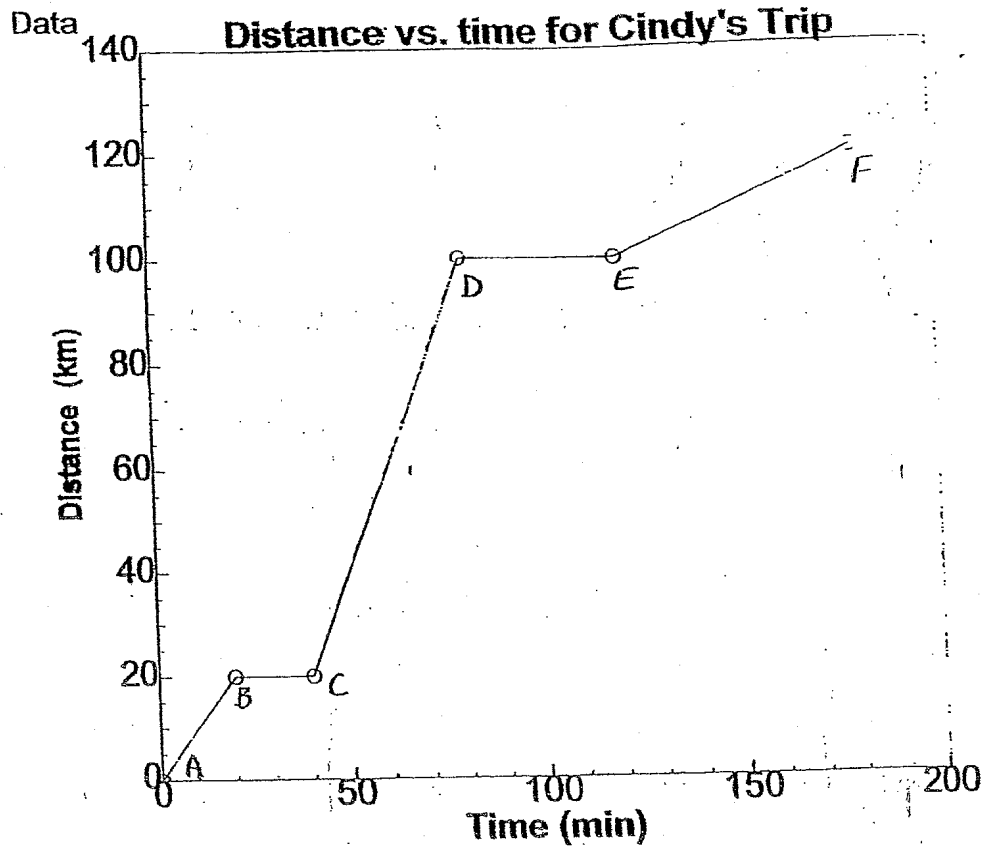
A Speedy Journey

Use the graph below to answer the questions about the journeys of two cars.



1. How far did car A travel before it met car B? _____
2. How long had the two cars been traveling before they met? _____
3. How far did both cars travel at the same speed? _____
4. How long did it take both cars to get to point C? _____
5. Which car had constant speed? _____? What was its speed? _____
6. What were the speeds of the other car? _____

Time and distance for Cindy's trip	
Time (min)	Dist (km)
0	0
0.00000	0.000
20.00000	20.000
40.00000	20.000
80.00000	100.000
120.00000	100.000
180.00000	120.000



The graph and table are for Cindy's trip to another city in a car.

- Use the data in the table or in the graph to calculate Cindy's average speed for the entire trip.
- Between what 2 points did she travel the fastest?
- What was she doing between points B and C?
- On her return trip (from point F to point A) if her average speed was 30 km/hour how long did her return trip take?